

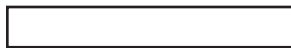
IAT 102 Graphic Design

Assignment: Grid Analysis



In this assignment you will be analyzing printed materials in terms of their structure. We have asked you to bring **a magazine and a book (a book with images) to the labs.**

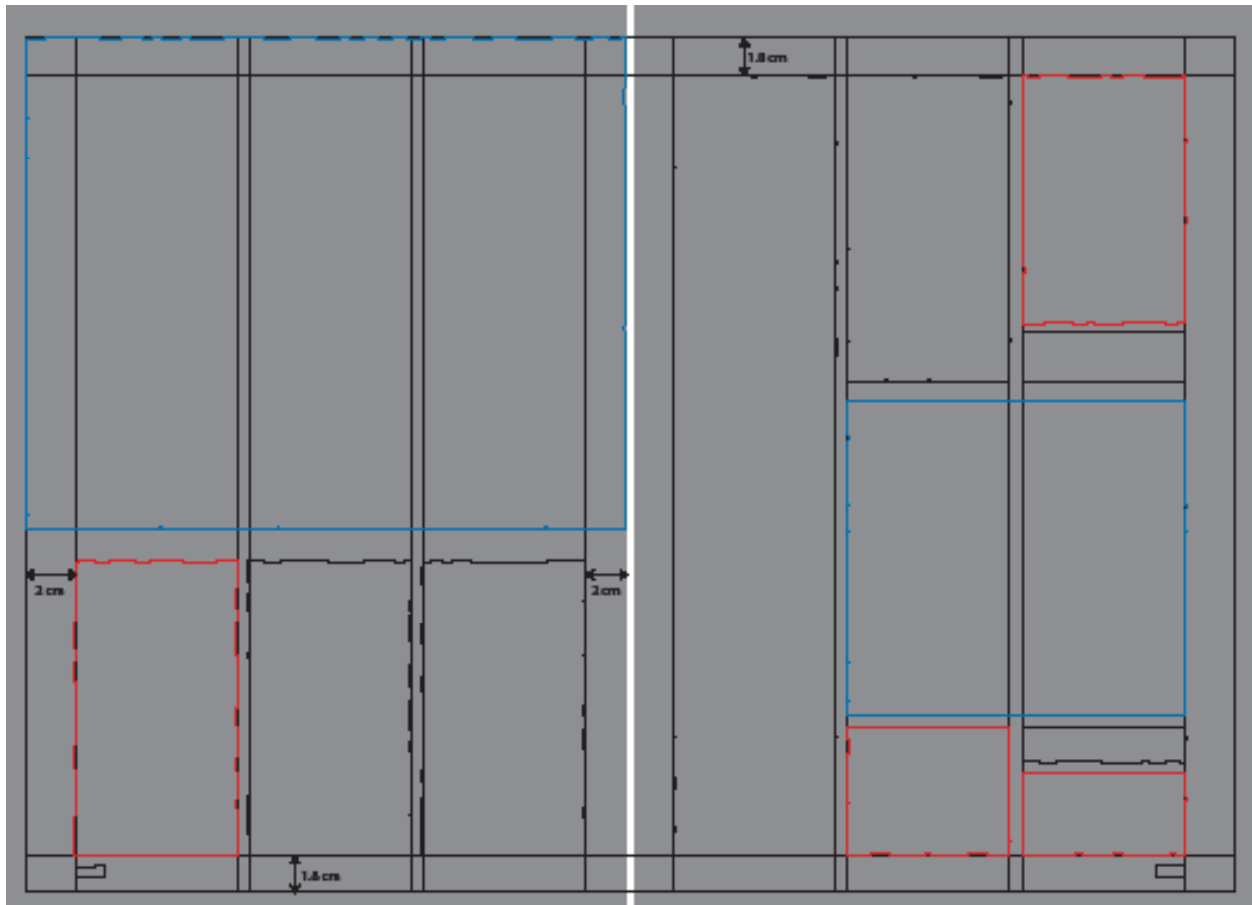
1. Take some tracing papers and cover a spread (= two pages) of the first one of your 2 printed items.



2. Use a colour pen and your ruler, and identify and draw the underlying grid of the document. All the columns need to have the same width. The width of the different page margins (top, bottom, inside, outside) may vary. Use the same colour to draw the edges of the page.



3. Use the same colour to draw a frame around all the **text blocks** on the two pages.



4. Use another colour to draw a frame around all the **images** on the two pages.



5. Use the third colour to draw a frame around all the empty areas (=white space) that lie **within** the page margins.

5. Now measure the top, bottom, inner and outer margin of the pages and write your measurements on your sheet

6. Repeat this with all your other item (magazine or book).
 What proportions between text / image / and white space do you observe? What rules about grids can you conclude from this analysis?

Deliverables

Submit sheets for brochure, magazine AND book spreads in lab
 individual assignment,
 write your name, lab section and student number on every sheet

DUE: In labs next week